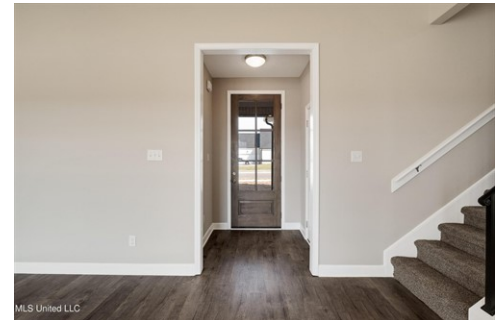




\$ 409,995



MLS United LLC



MLS United LLC



MLS United LLC



MLS United LLC

5330 Aylesbury Ln, Olive Branch, MS 38654

- » Beds: 5 | Baths: 3 Full
- » MLS #: 4100754
- » Single Family | 2,300 ft² | Lot: 17,424 ft²
- » More Info: [5330AylesburyLn.IsForSale.com](https://www.5330AylesburyLn.IsForSale.com)



Jennie Holliday
 (901) 334-6961 (mobile)
 (662) 548-2000 (office)
holliday@collins-maury.com
<https://www.hollidaysellshomes.com>



Coldwell Banker Collins-Maury
 3276 Goodman Rd E
 Southaven, MS 38672
 (662) 548-2000

New Construction of the DOVE E Floor plan is a beautiful 5 bedroom, 3 full bathroom home with an open concept, fireplace, large island and dining area. Three bedrooms and 2 full baths are on the main, and two bedrooms and a full bath are upstairs. The primary suite features a spa like bathroom with his and her closets, soaking tub, separate shower and a water closet for privacy. Completion April 30, 2025. Photos of completed home are samples only. Finishes will likely vary.

